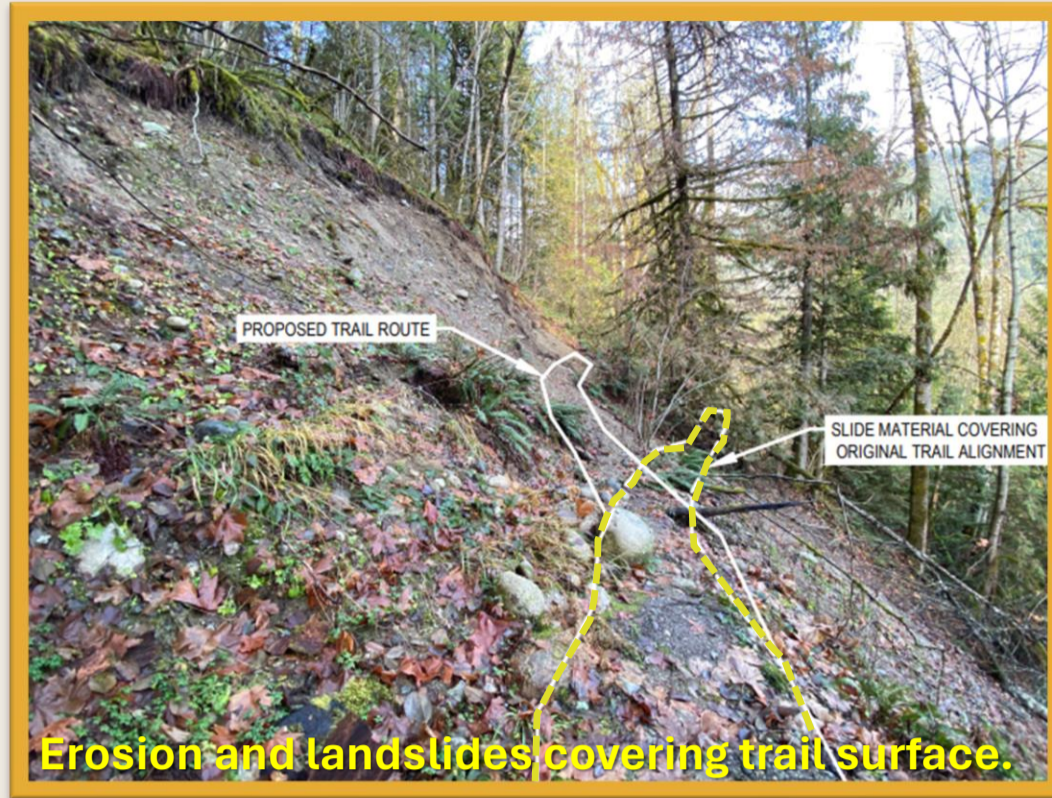


Coquihalla Canyon Damage

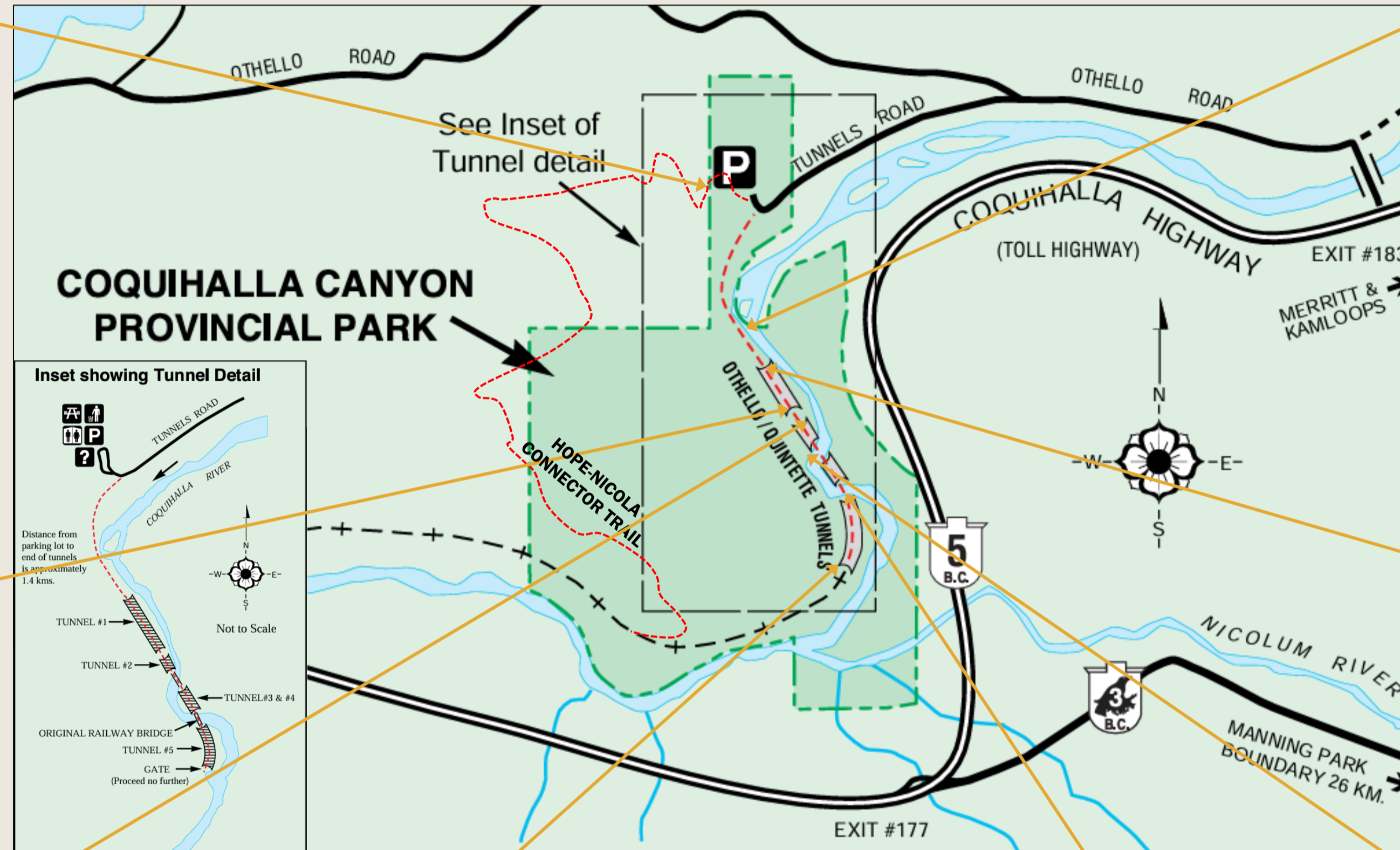
Coquihalla Canyon Park was significantly impacted by the November 2021 atmospheric river events. Access roads, trails, tunnels, and bridges were severely damaged, making the park unsafe for visitors. The collection of images below offers insight into the approximately 30 unique sites in the park that need repair.



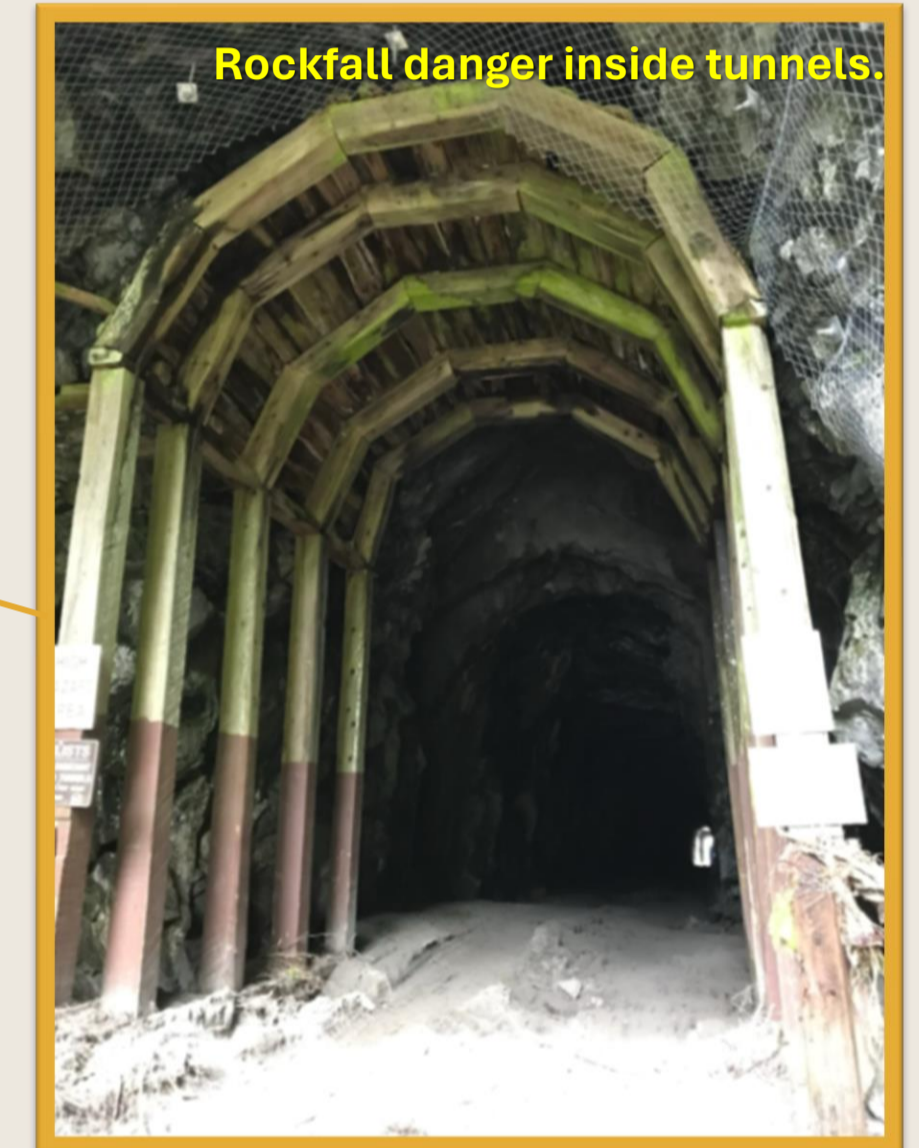
Erosion and landslides covering trail surface.



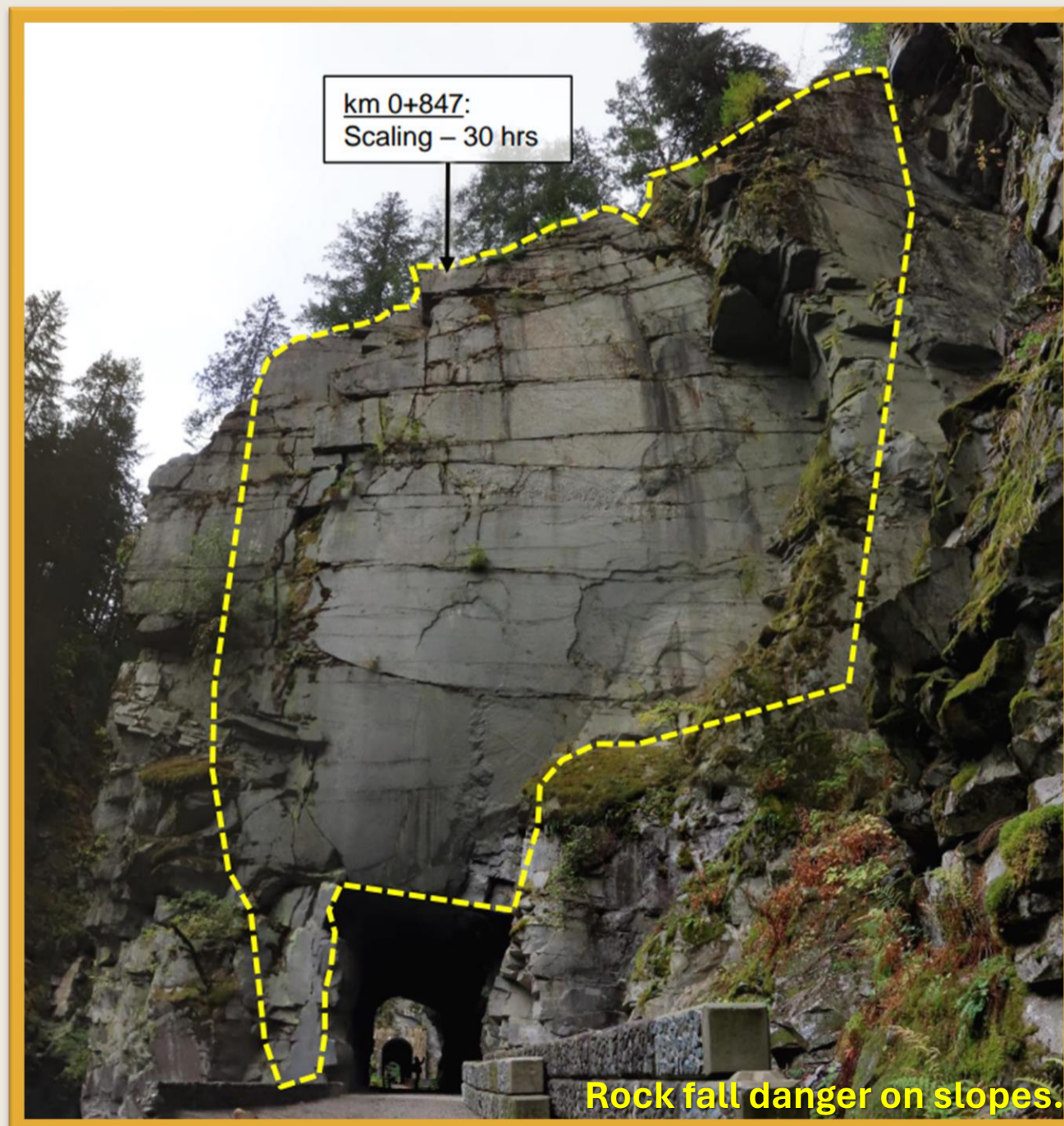
Debris deposition on trail and in tunnels.



Safety railing destruction.



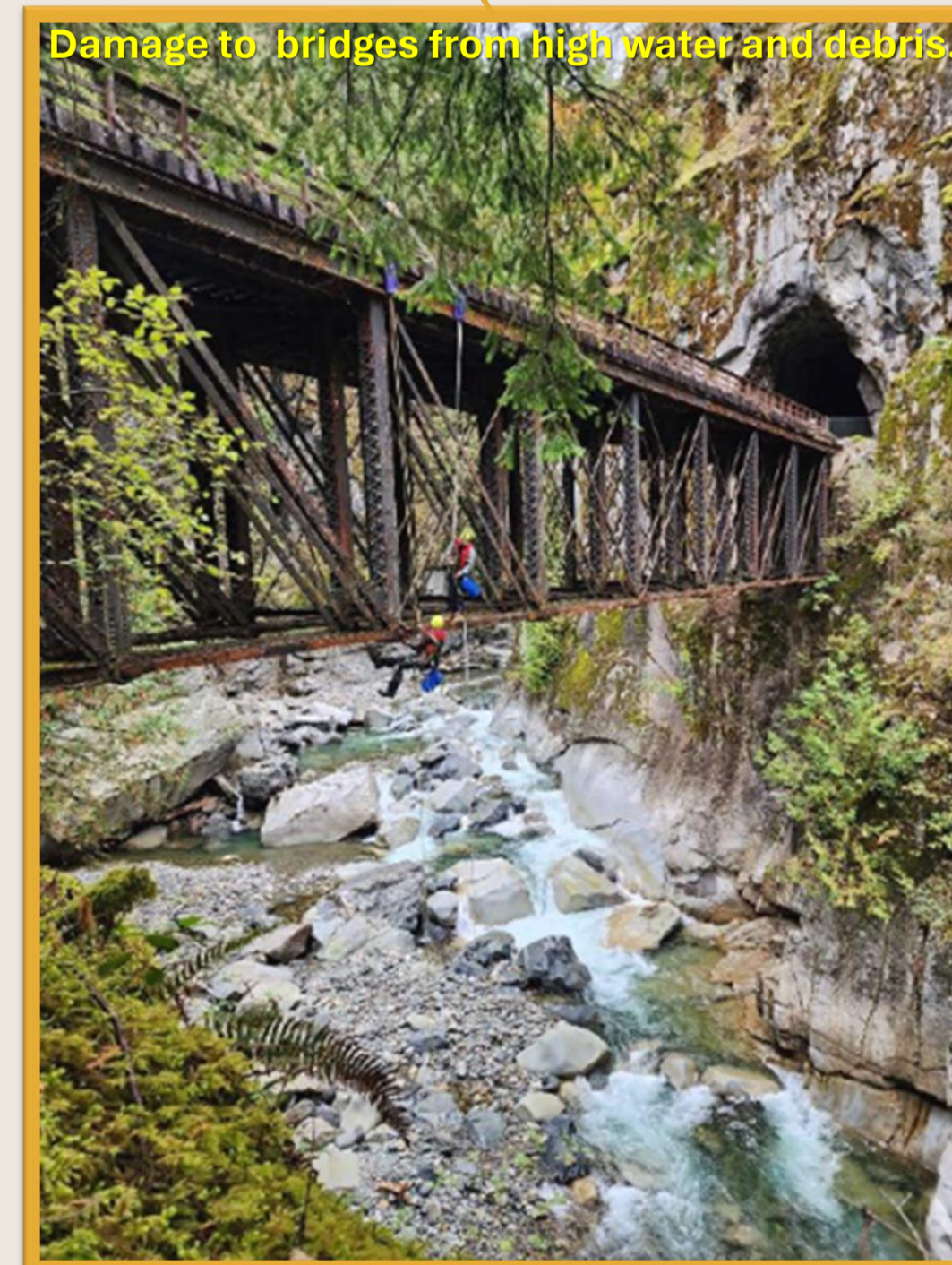
Rockfall danger inside tunnels.



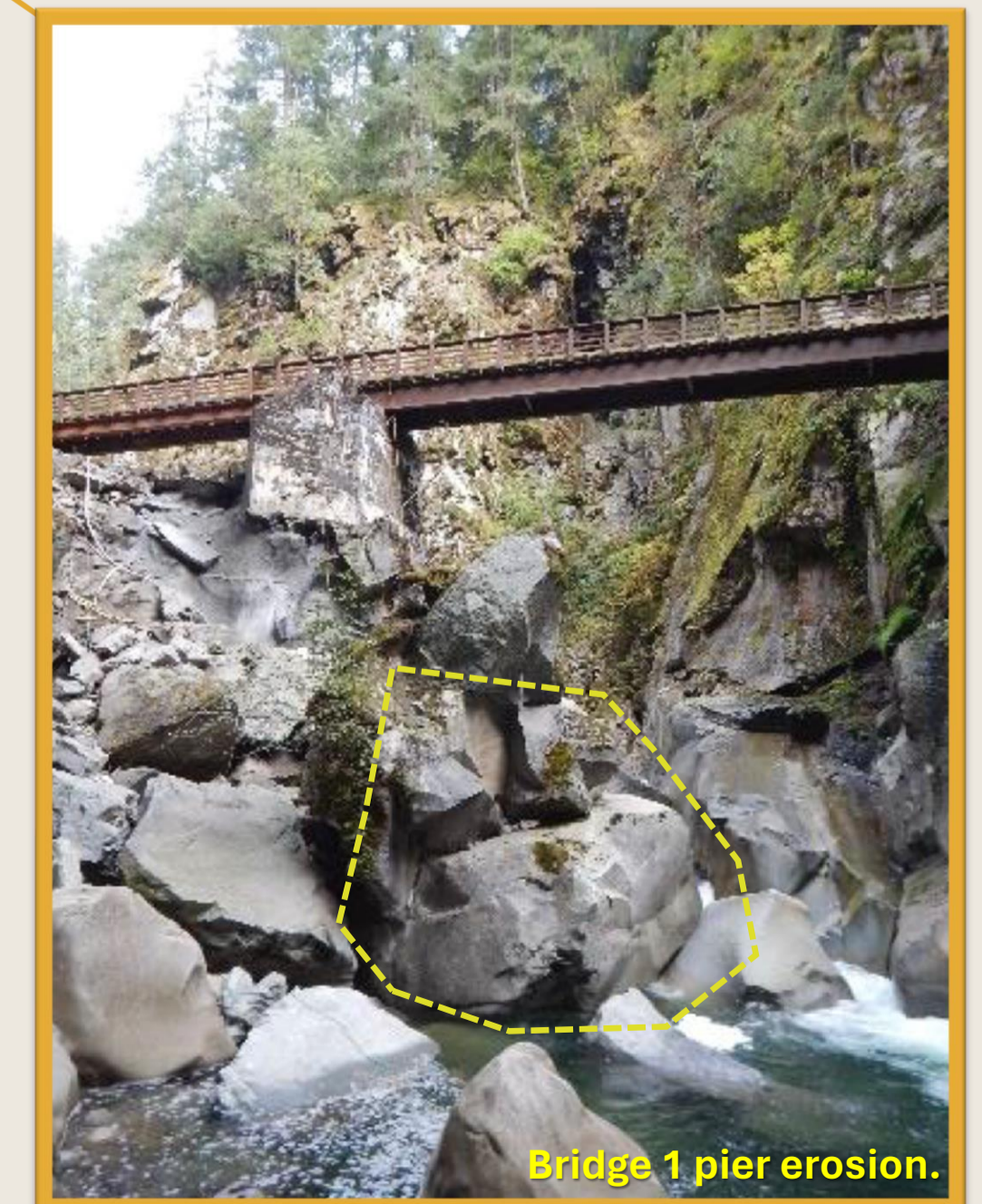
Rock fall danger on slopes.



Slope failure and tunnel destabilization.



Damage to bridges from high water and debris.



Bridge 1 pier erosion.